

## Parts of fuel supply system, removing and installing

Removing and installing fuel filter:

◆ Engine code AAB

⇒ *Repair Manual , 2.4 Liter 5-Cyl. 2V Diesel Fuel Injection & Glow Plug, Repair Group 23; Servicing fuel injection system; Removing and installing fuel filter.*

Checking fuel system for leaks:

◆ Engine code AAB

⇒ *Repair Manual , 2.4 Liter 5-Cyl. 2V Diesel Fuel Injection & Glow Plug, Repair Group 23; Servicing fuel injection system.*

Servicing accelerator mechanism:

◆ Engine code AAB ⇒ [Page 20-13](#) .

Servicing cold start accelerator operating cable

(engine code AAB) ⇒ [Page 20-16](#) .



Observe safety precautions ⇒ [Page 20-6](#) .

Observe rules for cleanliness ⇒ [Page 20-7](#) .

**WARNING!**

***When doing any repair work, especially in the engine compartment, due to the cramped conditions, pay attention to the following:***

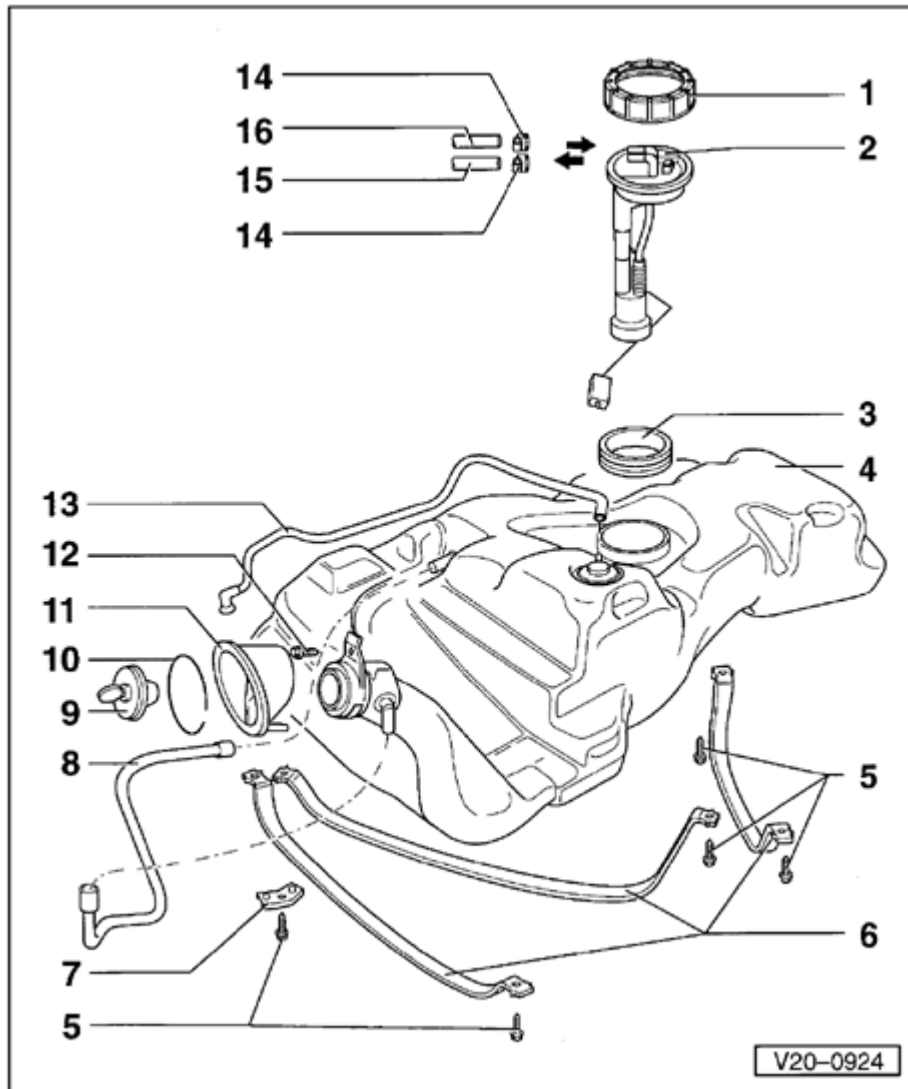
- ◆ ***Route all sorts of lines (e.g. for fuel, hydraulics, activated charcoal filter system, coolant, refrigerant, brake fluid and vacuum lines and hoses) and electrical wiring so that the original positions are restored.***
- ◆ ***Make sure sufficient clearance to all moving or hot components.***

**Note:**

- ◆ *Hose connections are secured with either screw-type or spring-type clips.*
- ◆ *Always replace clamp-type clips with screw or spring-type clips.*
- ◆ *Fuel hoses in engine compartment must be secured with spring-type clips. The use of*

*clamp or screw-type clips is not permissible.*

- ◆ *VAG 1921 pliers are recommended when installing spring-type clips.*



## Fuel tank with attachments, removing and installing

### 1 - Union nut

- ◆ Remove and install with wrench 3217

### 2 - Sender for fuel gauge -G-

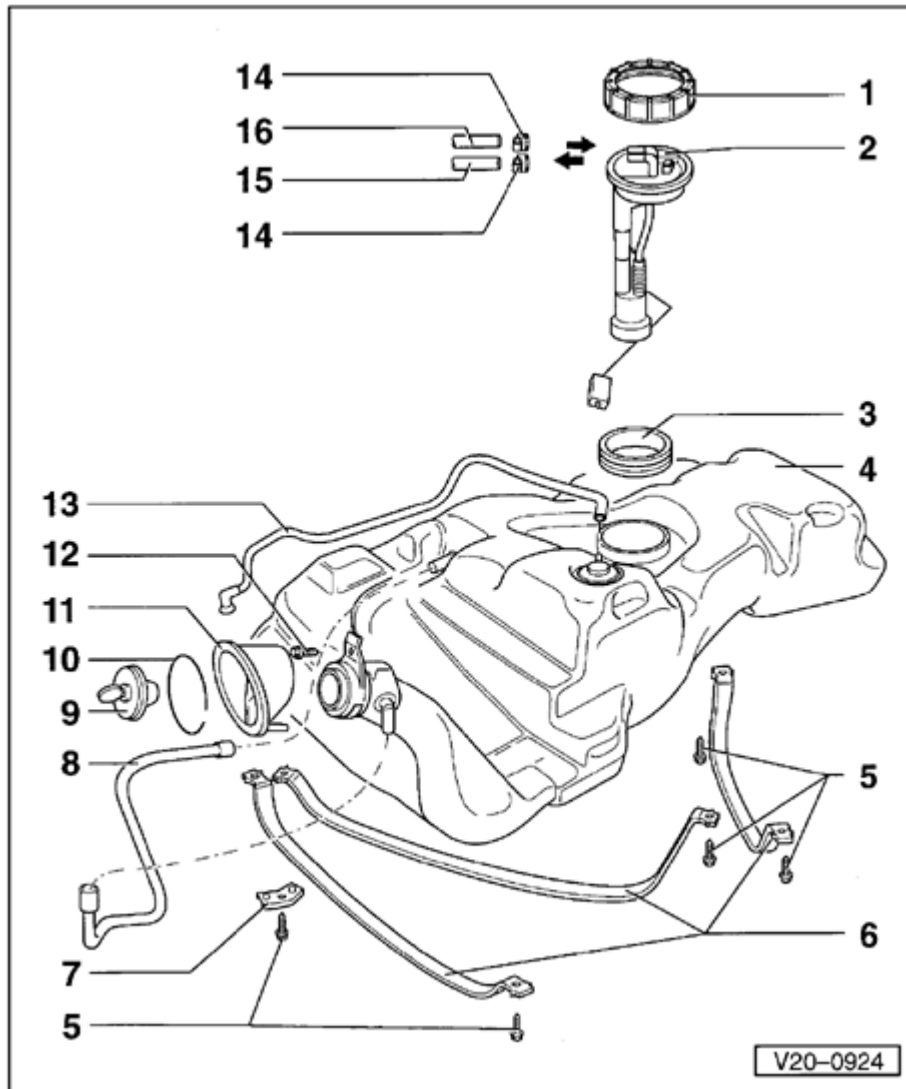
- ◆ Note installation position
- ◆ Removing and installing ⇒ [Page 20-8](#)

### 3 - Sealing ring

- ◆ Replace if damaged
- ◆ Coat with fuel when installing

### 4 - Fuel tank

- ◆ Support with engine and transmission jack VAG 1383 A when removing
- ◆ Removing and installing ⇒ [Page 20-10](#)



**5 - 25 Nm**

**6 - Securing strap**

◆ Note differing length

**7 - Bracket**

◆ For securing straps

**8 - Vent line**

◆ Filling vent

**9 - Cap**

◆ Replace seal if damaged

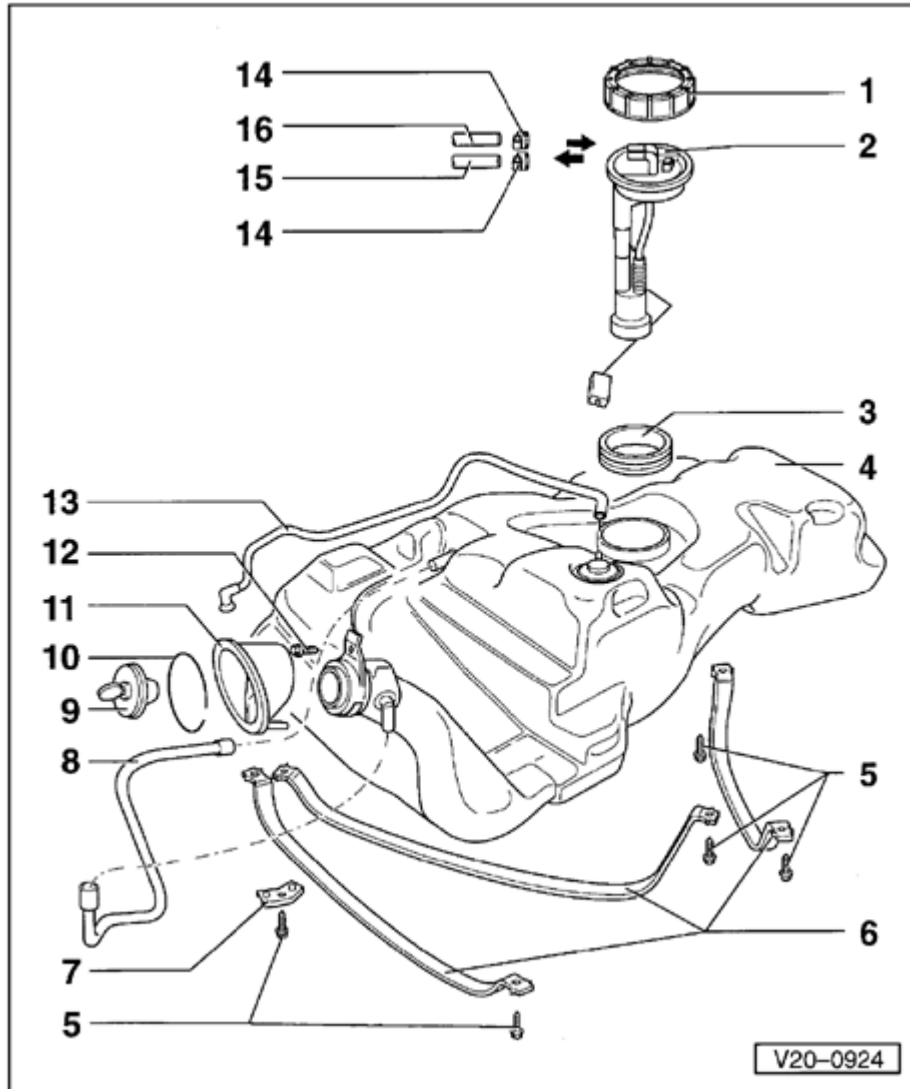
**10 - Retaining ring**

**11 - Rubber cup**

**12 - 10 Nm**

**13 - Vent line**

◆ Operating vent



14 - Screw-type clip

15 - Supply line

◆ Black

16 - Return line

◆ Blue



## Safety precautions when working on the fuel supply system

When removing and installing the fuel gauge sensor on a full or partly filled fuel tank the following must be observed:

- ◆ Before commencing work, switch on exhaust extraction system and place an extraction hose close to the sensor opening in the fuel tank to extract escaping fuel fumes.

If no exhaust extraction system is available, a radial fan (as long as motor is not in air flow) with a displacement greater than 15 m<sup>3</sup>/h can be used.

- ◆ Prevent skin contact with fuel! Wear fuel-resistant gloves!



## Rules for cleanliness

When working on the fuel supply/injection system, pay careful attention to the following rules:

- ◆ Thoroughly clean all unions and the adjacent areas before disconnecting.
- ◆ Place parts that have been removed on a clean surface and cover. Do not use fluffy cloths!
- ◆ Carefully cover opened components or seal, if the repair cannot be carried out immediately.
- ◆ Only install clean components: Only unpack replacement parts immediately prior to installation. Do not use parts that have been stored loose (e.g. in tool boxes etc.).
- ◆ When the system is open:

Do not work with compressed air if this can be avoided.

Do not move vehicle unless absolutely necessary.

- ◆ Also make sure that no diesel fuel runs onto the coolant hoses. Hoses coming in contact with fuel must be cleaned immediately. Damaged hoses must be replaced.



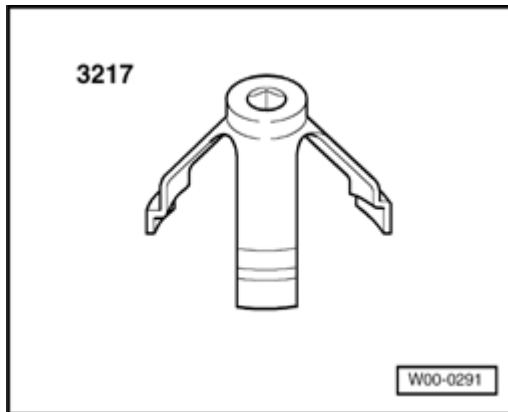
## Fuel gauge sensor, removing and installing

### Special tools and equipment required

- ◆ 3217 Union nut wrench

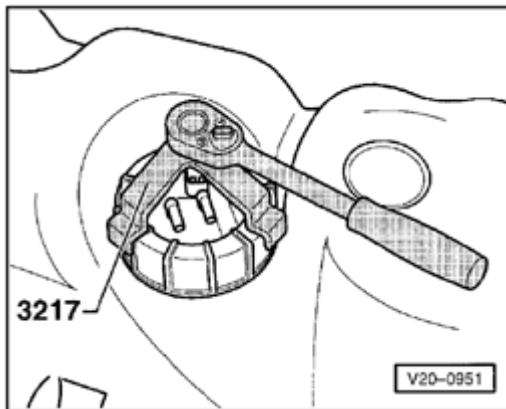
### Removing

- Lift carpet above the parking brake lever.
- Remove cover plate.





- Disconnect connector and supply and return lines off fuel gauge sensor.

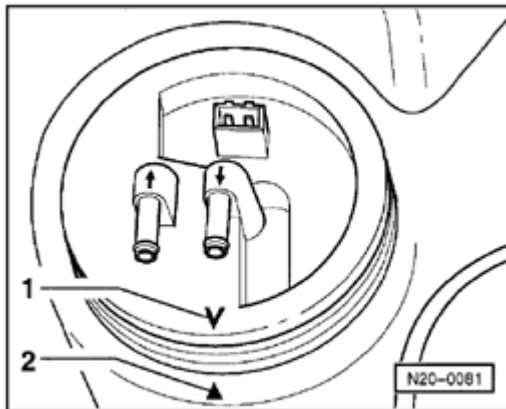


A

- Remove union nut with wrench 3217.
- Take out fuel gauge sensor.

### Installing

Installing the fuel gauge sensor is carried out in the reverse order.

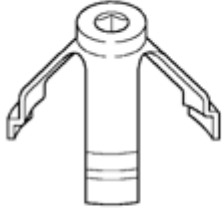




A

- Note installation position:

Marking on the sensor -1- must align with marking on the fuel tank -2-.



<p>3217</p> 	<p>V.A.G 1383 A</p> 
<p>V.A.G 1331</p> 	
	<p>W20-0002</p>

## Fuel tank, removing and installing

### Special tools and equipment required

- ◆ 3217 Wrench for union nut
- ◆ VAG 1383 A Engine/transmission jack
- ◆ VAG 1331 Torque wrench (5 - 50 Nm)



## Removing

Observe safety precautions ⇒ [Page 20-6](#) .

- With ignition switched off disconnect battery ground (GND) strap.

### **Note:**

*If necessary the anti-theft coding for the radio must be obtained first.*

- Drain fuel tank, clean fuel filler neck and surrounding area.
- Remove clamping ring and rubber cup from filler neck and remove securing bolt.
- Remove tensioning strap. When doing this support fuel tank with engine/transmission jack VAG 1383 A.
- Lower using engine/transmission jack VAG 1383 A only to allow supply and return lines and fuel gauge sensor connector to be remove.

**Note:**

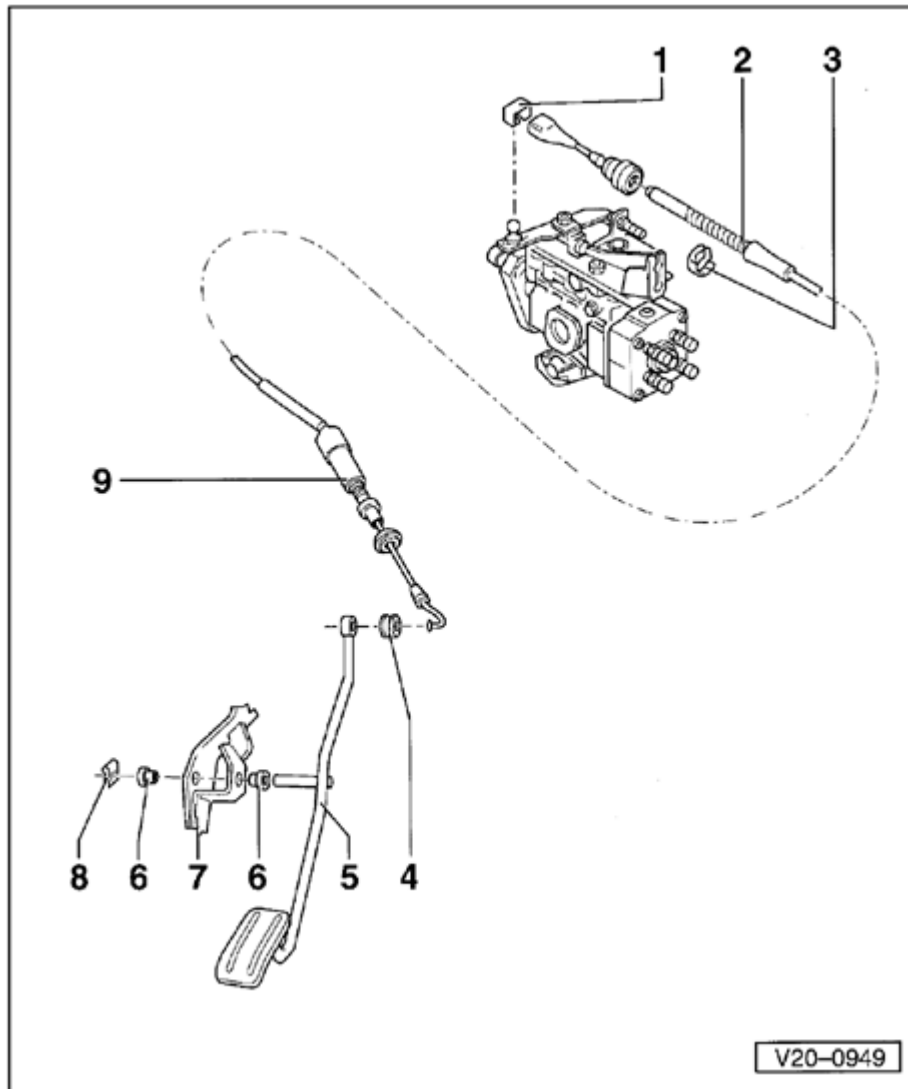
*On vehicles with additional heater, remove fuel lines between supply and return lines.*

- Lower fuel tank.

**Installing**

Install in reverse order but note following:

- ◆ Route breather hose kink free.
- ◆ Secure fuel hoses with screw-type clamps.
- ◆ Do not interchange supply and return lines (return line -blue-).



## Servicing accelerator mechanism (engine code AAB)

1 - Retainer

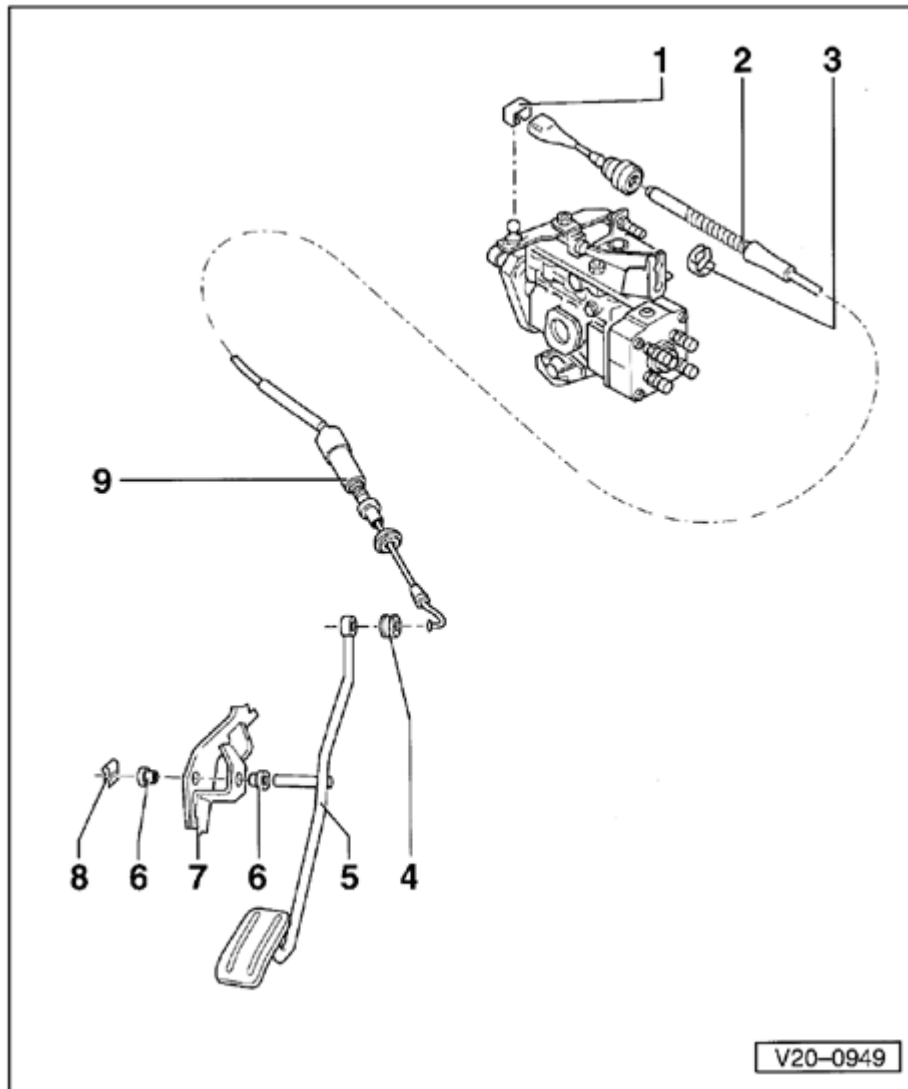
2 - Accelerator cable

- ◆ Adjust by moving position of securing clip (retainer) on outer cable grooves ⇒ [Page 20-15](#) , adjusting accelerator cable

3 - Securing clip

4 - Rubber bushing

5 - Accelerator pedal



6 - Bushing

7 - Accelerator pedal carrier

8 - Securing clip

9 - Load change damper



## Accelerator cable, adjusting

Engine code AAB

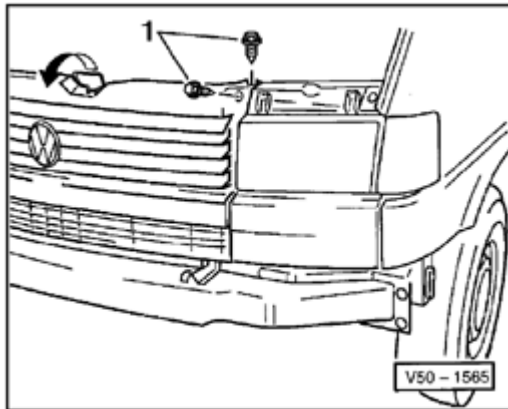
Work sequence

Vehicles 09.94 ➤

- Remove radiator grille:

⇒ [Repair Manual , Body Exterior, Repair Group 66; Trims](#)

Continued for all vehicles



A

- Remove left and right-hand securing bolts -1-.

**Note:**

Vehicles 09.94 ➤ Qty. 1 securing bolt located on each left and right-hand side in lock carrier.

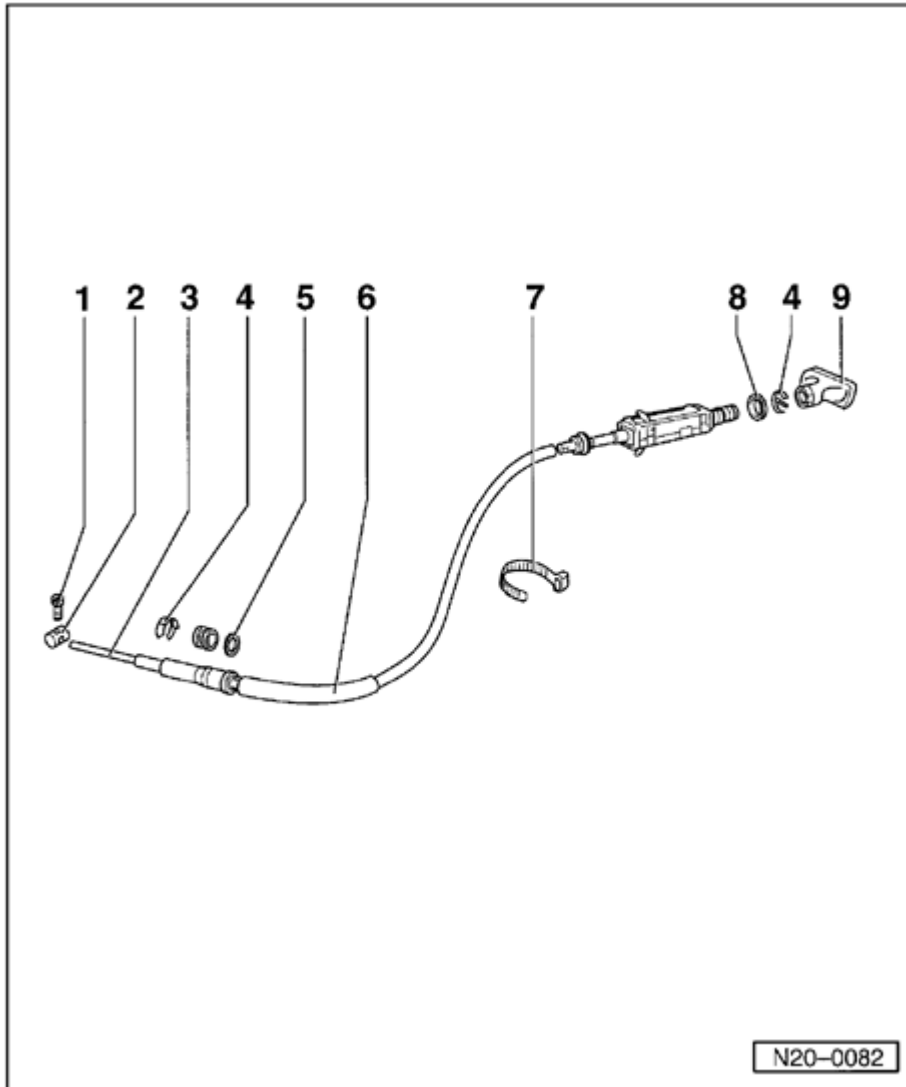
- Fold lock carrier and radiator out forward -arrow-.



A

- When adjusting accelerator pedal full throttle position, adjust

accelerator cable by moving position of securing clip (retainer) -arrow-  
on outer cable grooves so that the injection pump lever lies stress free  
on stop.



## Cold start accelerator (CSA) operating cable (engine code AAB), servicing

- 1 - Locking screw
- 2 - Pivot pin
- 3 - Pull cable
- 4 - Securing clip
- 5 - Washer
- 6 - CSA operating cable
  - ◆ Adjusting ⇒ [Page 20-17](#)
- 7 - Cable tie
  - ◆ In engine compartment
- 8 - Nut
- 9 - Release lever



## CSA operating cable, adjusting

Engine code AAB

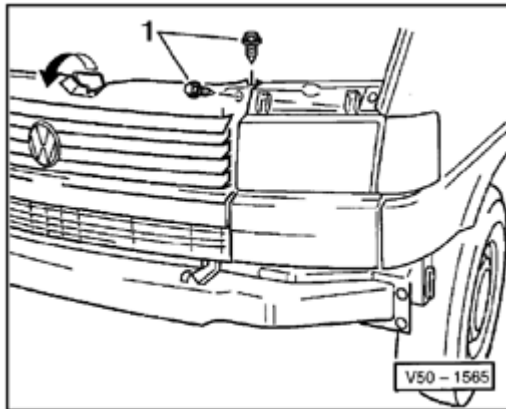
Work sequence

Vehicles 09.94 ➤

- Remove radiator grille:

⇒ [Repair Manual , Body Exterior, Repair Group 66; Trims](#)

**Continued for all vehicles**



A

- Remove left and right-hand securing bolts -1-.

**Note:**

*Vehicles 09.94 ➤ Qty. 1 securing bolt located on each left and right-hand side in lock carrier.*

- Fold lock carrier and radiator out forward -arrow-.



A

- Slide washer -1- on operating cable and secure cable with securing clip

-2-

- Set operating lever in 0 position -direction of arrow-.
- Pull inner cable taut and secure in pin -3- with locking screw.