

Volkswagen Corrado 1990 - 1994
General Engine
General (Page 00-2)

Type and model identifications

Model code *	Model years	Designation		Body style	Trans	Engine code **
		USA	CANADA			
509014	1990-1992	Corrado	Corrado G-60	2-Door Sport	5-Spd	PG
509018	1990-1992	Corrado	Corrado G-60		Auto.	PG
5090Q4	1992 (USA) 1993 (Canada)	Corrado SLC	Corrado VR-6		5-Spd	AAA
5090Q8	1992 (USA) 1993 (Canada)	Corrado SLC	Corrado VR-6		Auto.	AAA

* The 5th digit of the Vehicle Identification Number indicates if the vehicle engine is equipped for either 49-States or California.

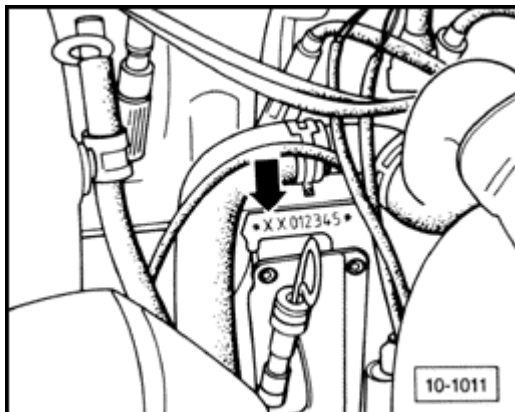
**** Engine code KW @ RPM (BHP)**

PG	118 @ 5600 (158)
AAA	132 @ 5800 (178)

Assemblies	Type	Code letters	BHP net (SAE)	RPM
Engine 1.8L G-Charger (Digifant)	-	PG	158	5600
Engine 2.8L VR-6 Motronic	-	AAA	178	5800
5-Speed Manual Transmission	02A	CDM AYL ATA	-	-
4-Speed Automatic	096	APB APC	-	-

Engine number

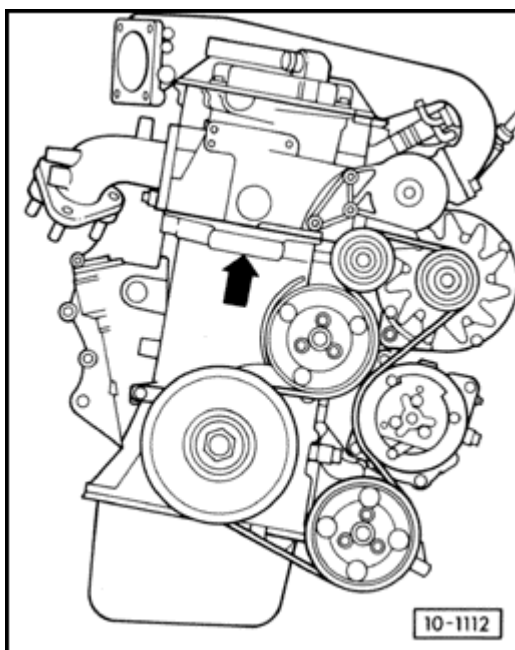
G-60



Location

- stamped on front of cylinder block(**arrow**)

SLC (VR-6)



Location

- stamped on front of cylinder block (**arrow**)
- sticker affixed on valve cover (pulley side)
- vehicle identification label in luggage compartment

Vehicle identification

- on top of instrument panel on driver's side, visible from the outside through the windshield
- on identification label in luggage compartment

Volkswagen Corrado 1990 - 1994
General Engine
General (Page 00-7)

Technical data

Corrado-Digifant

Engine code letters		PG
Start of production		Oct. 1988
Displacement	Liter, (cu. in.)	1.8, (109.8 cu. in.)
Power output	KW @ RPM, (SAE HP @ RPM)	118/5600 (158 @ 5600)
Torque	Nm @ RPM, (ft lb @ RPM)	225/4000 (166 @ 4000)
Cylinder bore diameter	mm, (in.)	81, (3.16)
Stroke	mm, (in.)	86.4, (3.40)
Compression ratio		8.0:1
Valve timing at 1mm valve lift	Inlet opens at TDC Inlet closes after BDC Outlet opens before BDC Outlet closes at TDC	0° 40° 40° 0°
Octane rating	RON minimum	91 (leadfree)*
Injection type		Digifant
Firing order		1-3-4-2
Catalytic converter		Yes
Oxygen sensor		Yes
Knock sensor		Yes
G-Charger		Yes

* Use of 95 RON results in maximum performance

Volkswagen Corrado 1990 - 1994
General Engine
General (Page 00-7a)

Technical data

Corrado VR-6 - Motronic

Engine code letters		AAA
Start of production		Oct. 1990
Displacement	Liter, (cu. in.)	2.8, (170 cu. in.)
Power output	KW @ RPM, (SAE HP @ RPM)	132/5800 (178 @ 5800)
Torque	Nm @ RPM, (ft lb @ RPM)	245/4200 (177 @ 4200)
Cylinder bore diameter	mm, (in.)	81.0, (3.16)
Stroke	mm, (in.)	90.3, (3.56)
Compression ratio		10.0:1
Valve timing at 1 mm valve lift	Inlet opens after TDC Inlet closes after TDC Outlet opens before TDC Outlet closes after TDC	8° 228° 12' 217° 3° 12'
Octane rating	RON minimum	91 (leadfree)*
Injection type		Motronic
Firing order		1-5-3-6-2-4
Catalytic converter		Yes
Oxygen sensor		Yes
Knock sensor		Yes

* Use of 95 RON results in maximum performance