

# Sharan

## Current Flow Diagram

**No. 53 / 1**

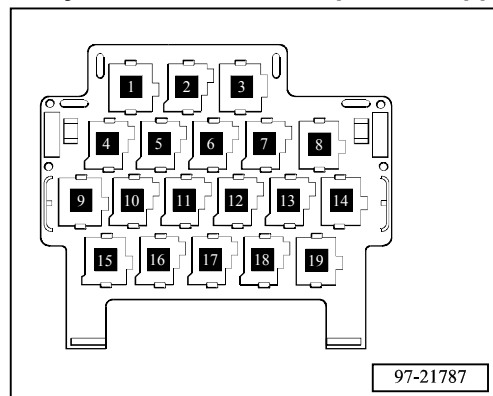
Edition 12.2004

### Multimedia system

from May 2001

For alternatives to relay and fuse positions as well as multi-pin connector wiring - see "Fitting locations" section

Relay locations on the 19 position upper relay carrier behind the multi-function unit:

**Note:**

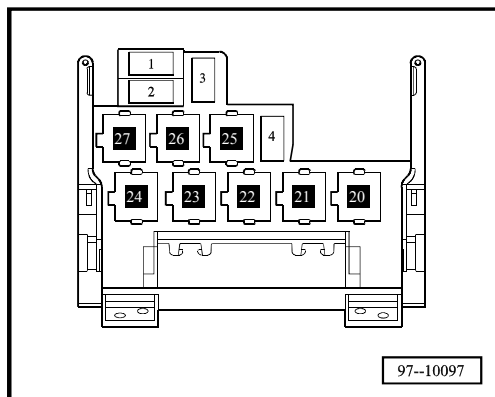
*The number in brackets behind the part designation denotes the control number on the housing.*

Fuse colours

- 30 A - green
- 25 A - white
- 20 A - yellow
- 15 A - blue
- 10 A - red
- 7,5 A - brown
- 5 A - beige
- 3 A - purple

For alternatives to relay and fuse positions as well as multi-pin connector wiring - see "Fitting locations" section

Relay locations on the 8 position lower relay carrier behind the multi-function unit:

**Note:**

*The number in brackets behind the part designation denotes the control number on the housing.*

Fuse colours

30 A - green

25 A - white

20 A - yellow

15 A - blue

10 A - red

7,5 A - brown

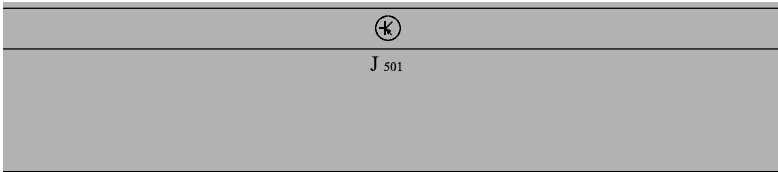
5 A - beige

3 A - purple

Sharan

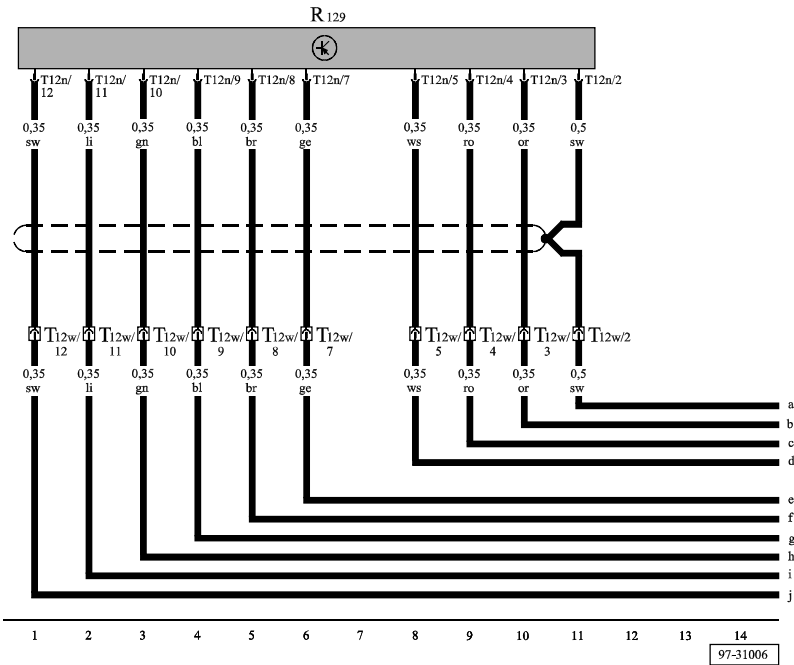
Current Flow Diagram

No. 53 / 2



Multimedia control unit, multimedia display unit 1

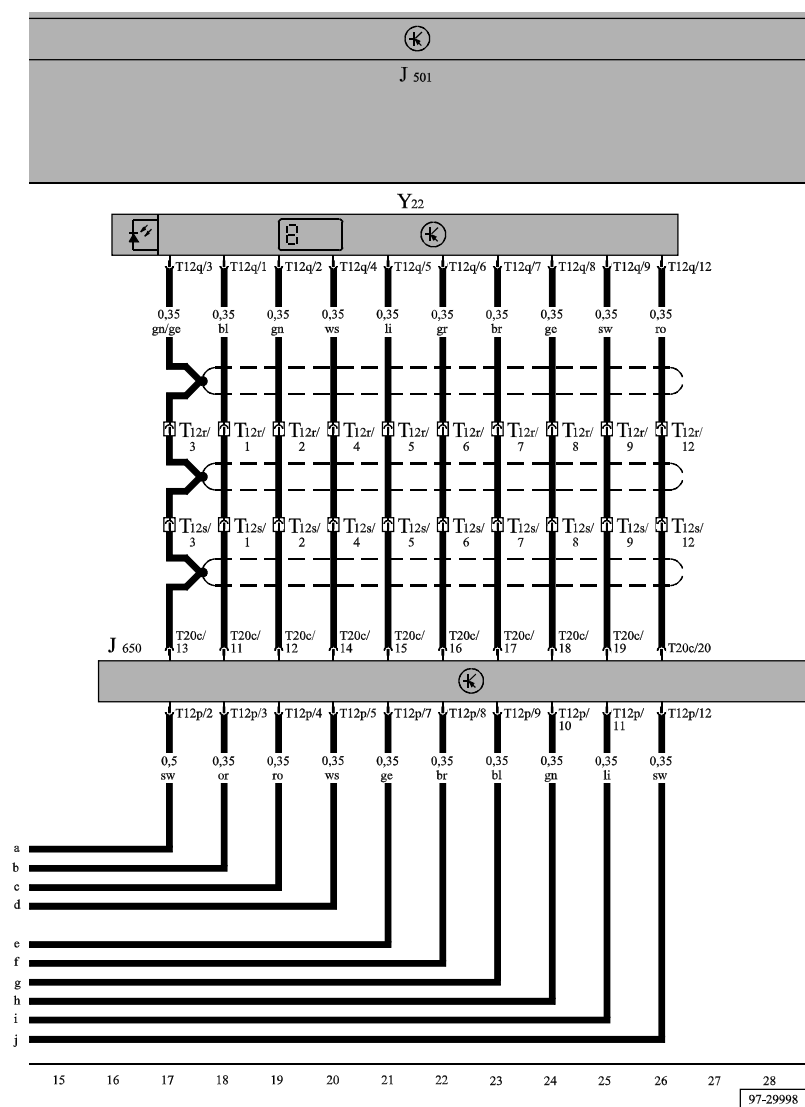
- J501 - Multifunction unit control unit
- T12n - 12-pin connector
- T12w - 12-pin connector, under front passenger seat
- R129 - Video recorder and DVD player



Sharan

## Current Flow Diagram

No. 53 / 3



**Multimedia control unit, multimedia system operating unit,  
multimedia headphones for left side, multimedia display unit 2**

- J501 - Multifunction unit control unit
- J650 - Multimedia control unit
- T12p - 12-pin connector
- T12q - 12-pin connector
- T12r - 12-pin connector, on driver seat
- T12s - 12-pin connector, under driver seat
- T20c - 20-pin connector
- Y22 - Multimedia display unit 1

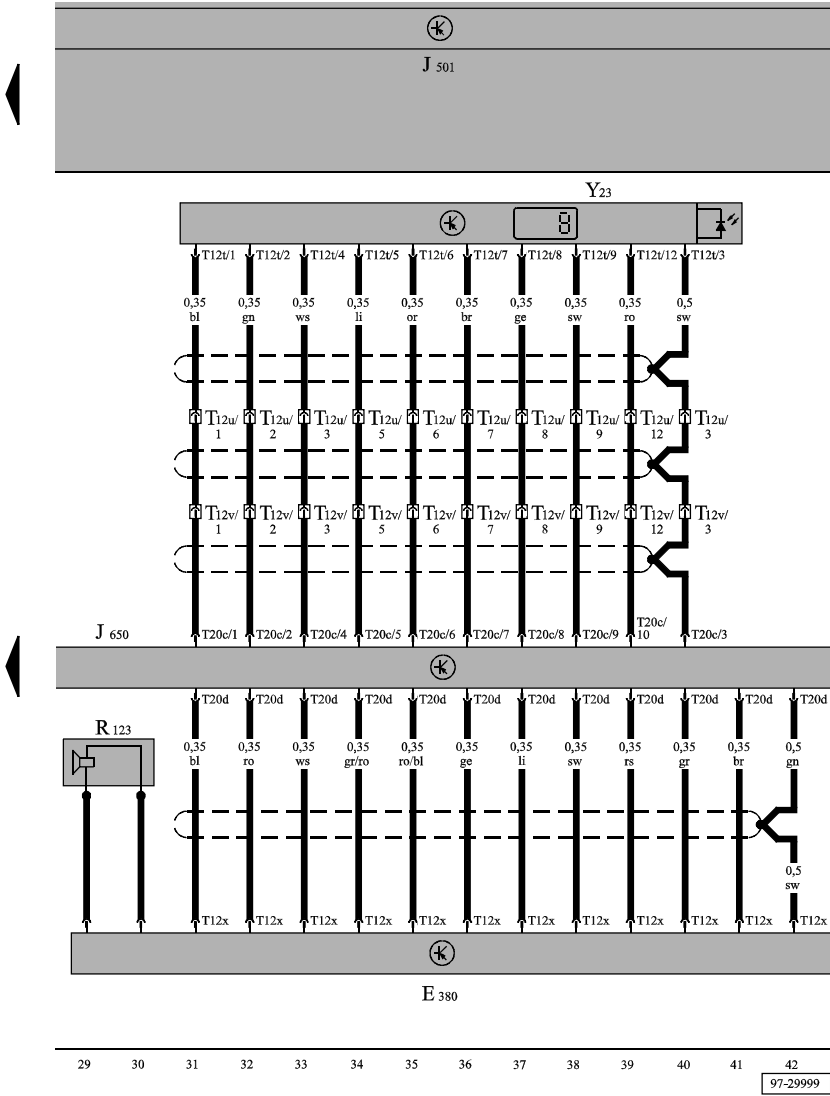
ws = white  
 sw = black  
 ro = red  
 rt = red  
 br = brown  
 gn = green  
 bl = blue  
 gr = grey  
 li = purple  
 vi = purple  
 ge = yellow  
 or = orange  
 rs = pink

97-29998

Sharan

Current Flow Diagram

No. 53 / 4



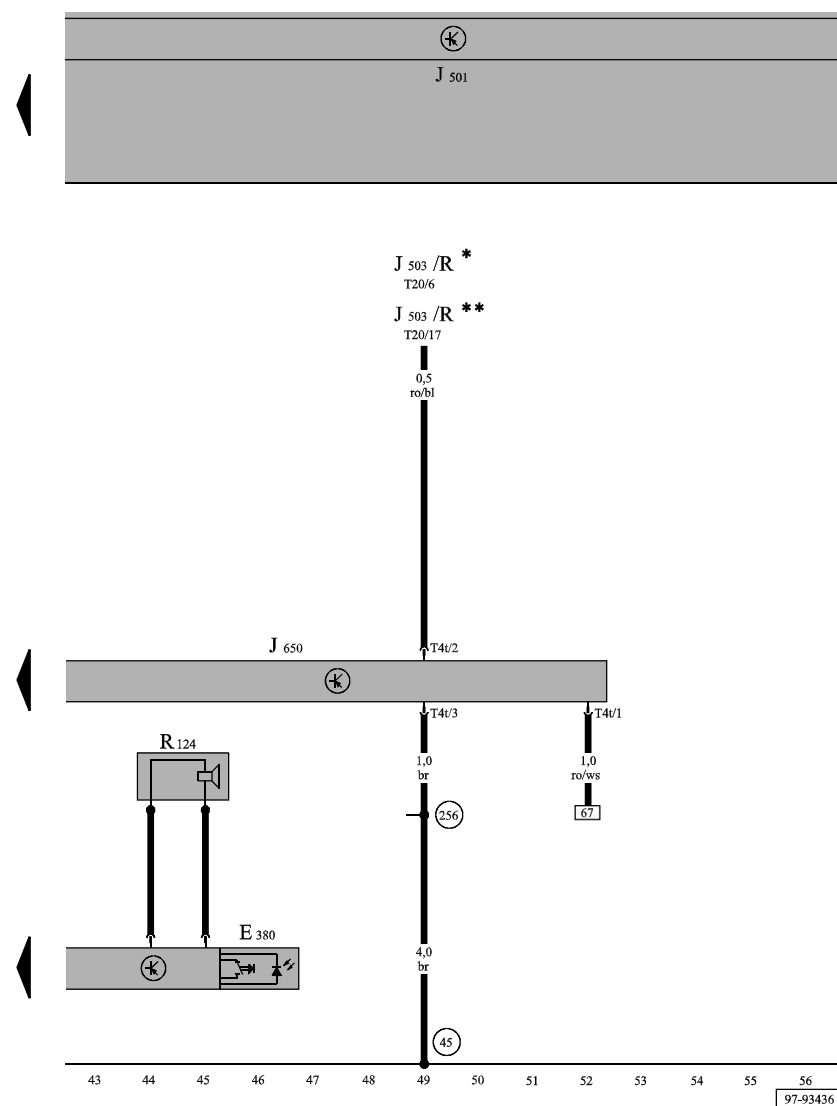
Multimedia control unit, multimedia system operating unit, multimedia headphones for right side

- E380 - Multimedia system operating unit
- J501 - Multifunction unit control unit
- J650 - Multimedia control unit
- R123 - Multimedia headphones for left side
- T12t - 12-pin connector
- T12u - 12-pin connector, in front passenger seat
- T12v - 12-pin connector, under front passenger seat
- T12x - 12-pin connector
- T20c - 20-pin connector
- T20d - 20-pin connector
- Y23 - Multimedia display unit 2

Sharan

## Current Flow Diagram

No. 53 / 5



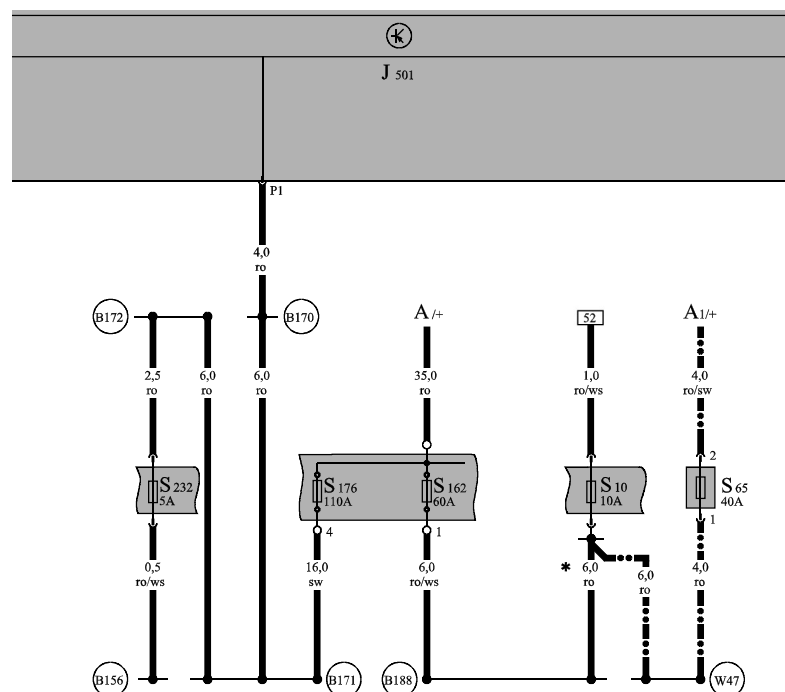
## Fuse locations

- E380 - Multimedia system operating unit
- J501 - Multifunction unit control unit
- J503 - Control unit with display for radio and navigation system
- J650 - Multimedia control unit
- R - Radio
- R124 - Multimedia headphones for right side
- T4t - 4-pin connector, yellow
- T20 - 20-pin connector
- 45 - Earth point, centre behind dash panel
- 256 - Earth connection 2, in radio wiring harness
- \* - from November 2003
- \*\* - up to October 2003

Sharan

## Current Flow Diagram

No. 53 / 6



## Fuse locations

- A - Battery
- A1 - Second battery
- J501 - Multifunction unit control unit
- S10 - Fuse 10 in fuse holder
- S65 - 2nd battery fuse, under front passenger seat
- S162 - Fuse 1 (30), in fuse holder on battery
- S176 - Fuse 4 (30), in fuse holder on battery
- S232 - Fuse 32 in fuse holder
- B156 - Positive connection (30a), in interior wiring harness
- B170 - Positive connection 2 (30), in interior wiring harness
- B171 - Positive connection 3 (30), in interior wiring harness
- B172 - Positive connection 4 (30), in interior wiring harness
- B188 - Positive connection 5 (30), in interior wiring harness
- W47 - Positive connection 2 (30a), in floor wiring harness
- \* - only models without second battery
- ... - only models with second battery

ws = white  
 sw = black  
 ro = red  
 rt = red  
 br = brown  
 gn = green  
 bl = blue  
 gr = grey  
 li = purple  
 vi = purple  
 ge = yellow  
 or = orange  
 rs = pink