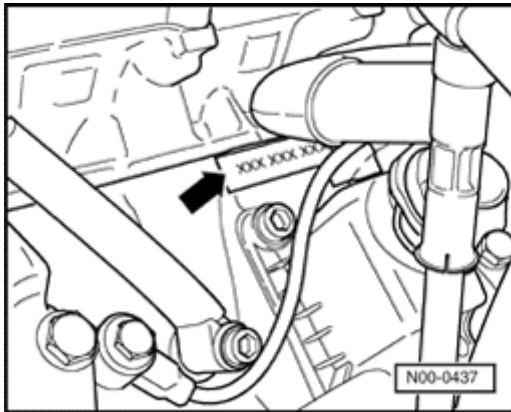


## Technical data

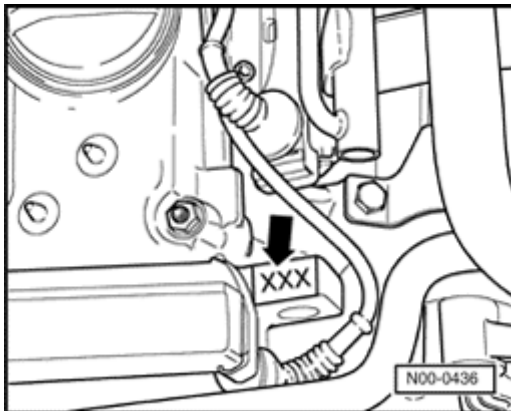
### Engine number



- ▲ The engine number (engine code letters and serial number) is located on the left side of the cylinder block (arrow).

Additionally there is a sticker on the cylinder head cover with the engine number.

The engine number consists of up to nine characters (alphanumeric). The first part (maximal 3 characters) makes up the "engine code", and the second part (6 characters), the "serial number". If more than 999,999 engines with the same engine code are produced, the first of the six characters is replaced with a letter.



- ▲ The engine code is also included on the vehicle data plate.

**Note:**

*The engine code is also found on the front engine lifting eyelet (visible after removing the top engine cover).*



## Engine data

Code letters	AEB	ATW
Manufacturing dates	08.97 ➤08.99	09.99 ➤
Displacement                      liters	1.8	1.8
Output                                  kW at rpm	110/5700	110/5700
Torque                                  Nm at rpm	210/1750 - 4600	210/1750 - 4600
Bore                                      diameter (mm)	81.0	81.0
Stroke                                    mm	86.4	86.4
Compression ratio	9.5 : 1	9.5 : 1
RON                                      Minimum	95 unleaded	95 unleaded
Fuel injection system	Motronic M3.8.2	Motronic ME7.5
Ignition system	Motronic M3.8.2	Motronic ME7.5
Emissions standard type	TLEV	LEV
Electronic Power Control (EPC) System	no	yes
Knock sensor control	yes	yes
On Board Diagnostic (OBD)	yes	yes
Oxygen sensor control	yes	yes
Three-way catalyst	yes	yes



<b>Code letters</b>	<b>AEB</b>	<b>ATW</b>
Exhaust gas recirculation	no	no
Turbocharging	yes	yes
Secondary air system	no	yes